

# US

WEEKLY



INSIDE ROSIE'S  
NEW FEUD p. 36



WHAT THEY DID FOR  
LOVE ONE NIGHT

## Burning Question

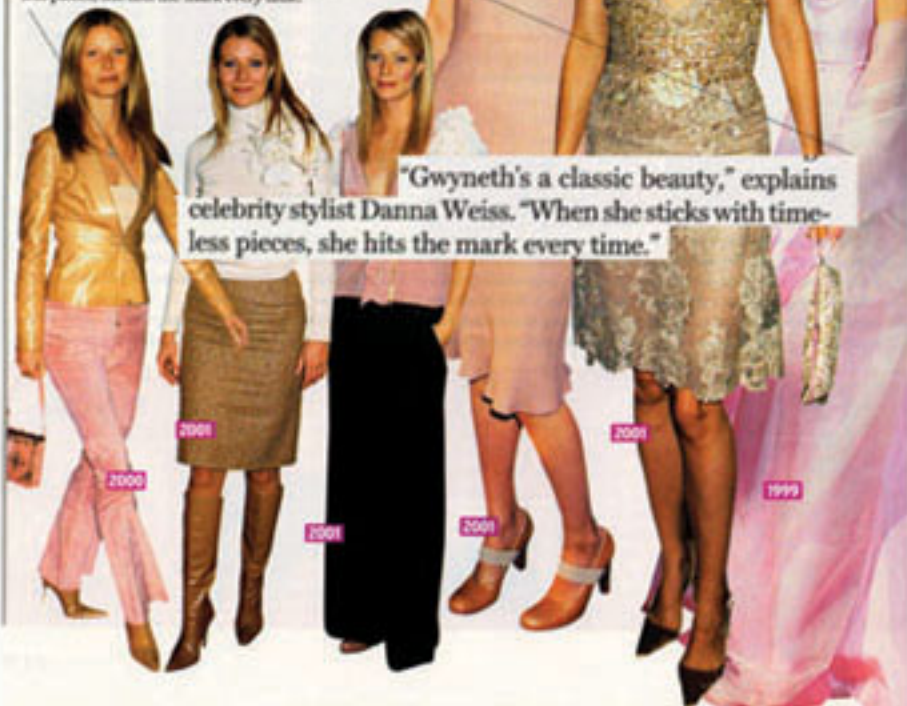
# Can Gwyneth Get Back

Last year, **Gwyneth** possessed the top style in Tinseltown. Now, after a series of fashion missteps, can *Possession's* star reclaim her fashion crown?

## Then: Red-Carpet Queen

For several years, Gwyneth Paltrow was fashionable perfection.

- **Her greatest hits:** That 1950 Grace Kelly-esque Oscar princess gown; tailored trousers and tasteful décolletage.
- **Why they worked:** "Gwyneth's a classic beauty," explains celebrity stylist Danna Weiss. "When she sticks with timeless pieces, she hits the mark every time."





# Her Fashion Mojo?

THE LOOK OF  
*POSSESSION*

## 2002: Summer Slump?

Lately, her style selections have been more schlumpy than spectacular. Consider the evidence.

- **Her misses:** Worn-out denim; workout sweats; her now-infamous 2002 Oscars' jaw-dropper (right).
- **Why they tanked:** "Gwyn's been losing her fashion sense by going for what's *trendy*, not for what works with her long, lean frame," observes Weiss.



"Gwyn's been losing her fashion sense by going for what's *trendy*, not for what works with her long, lean frame," observes Weiss.

**OSCAR INFAMY**  
Gwyneth shocked with Gothic.

Maybe Gwyneth should take a hint from her *Possession* wardrobe: Her academic character, Maud, suits up in completely classic cashmere sweaters, camel coats and corduroy suits from Celine - perfect for Gwyn's inner uptown girl.

## Hey, Gwynnie: Try These *Us* puts Paltrow in the experts' suggestions

### VALENTINO

Gwyneth has always been a Valentino fan. For the fall, the designer suggests a sleek black turtleneck with a beaded skirt and gold boots for a little extra kick (left) or a Hollywood classic with a twist - the white coat over a beaded blouse and suede trousers.



### CELINE

She looks so great in the Celine clothes she wears in *Possession*, Gwyneth should carry their lush look over to real life. Designer Michael Kors recommends a streamlined sweater and skirt (right) to suit her angular body and a not-too-flashy V-neck dress that will show off her shoulders.



### VERSACE

"Gwyneth is elegant like a classic movie star. She'd look amazing in my white cashmere coat and cotton trousers (far right). Gwyneth loves the way Versace pants fit," says Donatella Versace. Also great for Gwyneth? A sleeveless turtleneck and a skirt with tassels.

