

WEEKLY IN TOUCH



fashion *trauma*

WITH FASHION EXPERT DIANNA WEISS

Ever



**SHE'S LITERALLY
THE BELL OF THE BALL!**

Ring-a-ding dud!

Sarah Jessica Parker's super-size A-line coat is too over-the-top, says Weiss. As usual, Sarah picked a super-trendy look — she just happens to have grabbed the wrong size. Next time, she would look perfect if the coat just barely skimmed her body.

Sarah's winning look



This satin dress looks stunning on Sarah because its simple silhouette perfectly highlights her slender frame.



**TOP STYLED BY
EDWARD SCISSORHANDS**

Widow's walk

Helena Bonham Carter's top and skirt make for a costumey combo. If she wore the top, without the cutouts, and paired it with a solid black skirt, she'd look fab, not scary.

LEFT: TONY Stone Worldwide; MIDDLE: JEFFREY MATTING; RIGHT: JEFFREY MATTING

celebs strike out, but can these Oops! outfits be saved?



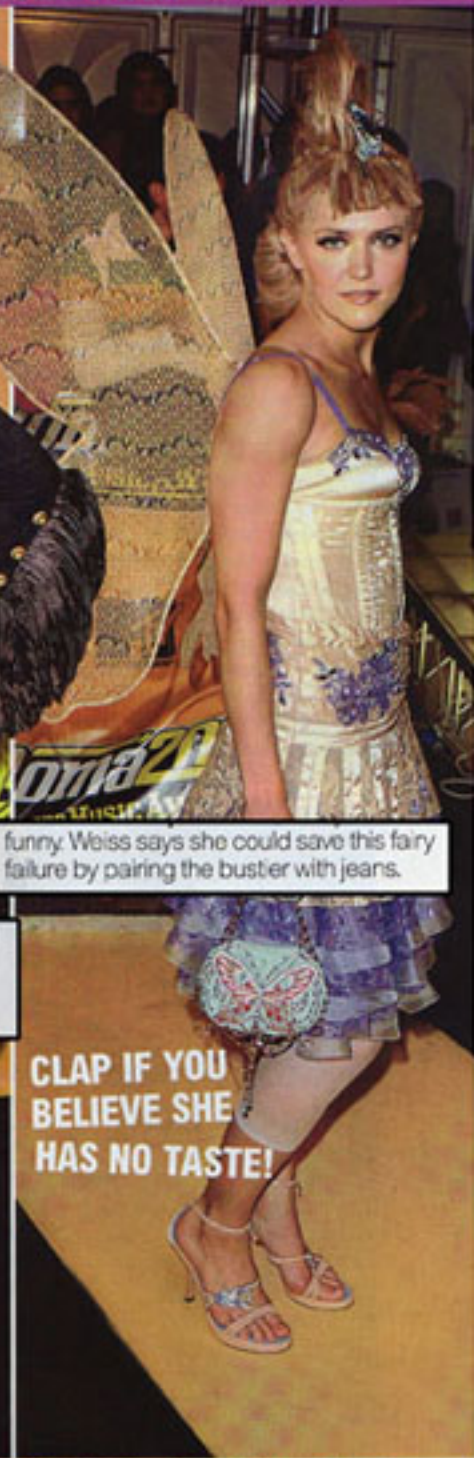
**SHE'S THE PRETTIEST
FLAMINGO ON
THE LAWN.**

With a vivid color like this, choose just one standout piece, Weiss advises.



**WORKIN' AT
THE CAR WASH**

Kylie Minogue's only problem is the bizarre feathery fringe sprouting from the sleeves and hem of her dress. All she needs to do to look gorgeous is pluck it, says Weiss.



funny. Weiss says she could save this fairy failure by pairing the bustier with jeans.

**CLAP IF YOU
BELIEVE SHE
HAS NO TASTE!**

Pepto dismal

With a vivid color like this, choose just one standout piece, Weiss advises. In starlet **Phoebe Price's** case, she should ditch the chunky necklace and the furry jacket.

Plume and doom

Kylie Minogue's only problem is the bizarre feathery fringe sprouting from the sleeves and hem of her dress. All she needs to do to look gorgeous is pluck it, says Weiss.

Got lost going to Neverland

There's having fun with fashion and then there's **Dominique Swain**, who just looks funny. Weiss says she could save this fairy failure by pairing the bustier with jeans.